



BOYDELL COURT, NW8 6NL

BOYDELL COURT, NW8 6NL

A recently refurbished 3 bedroom, 3 bathroom flat situated on the 7th floor of a smart block set within a sought after gated residential complex. The flat has been furnished to an exemplary standard and benefits from wood floors throughout. Benefits include parking on a first come first serve basis, 24 hour concierge/security and communal gardens. Swiss Cottage (Jubilee Line) underground station is 0.2 miles and the American School is within half a mile. The shops and cafés of St John's Wood High Street are approximately 0.6 miles away.

- 3 Bedrooms • 3 Bathrooms • Double Reception Room • Kitchen • Lift • 24 Hour Concierge • Off Street Parking • Communal Garden • Inclusive Central Heating • Camden Council Tax Band F

EPC Rating: D Council Tax Band: F

£1,300 PER WEEK

FURNISHED/UNFURNISHED

TENANTS FEES: As well as paying the rent, tenants may also be required to make the following permitted payments:

Holding Deposit (maximum of 1 week's rent)

Security Deposit equivalent to 5 or 6 weeks' rent (AST tenancies)

Utilities, Communications services charges including TV licence, and Council Tax

Please contact us for information regarding any further Tenants permitted payments under the Tenant Fees Act 2019

Misrepresentation Act 1967. This brochure and the descriptions and measurements herein do not constitute representation and whilst every effort has been made to ensure accuracy, this cannot be guaranteed.













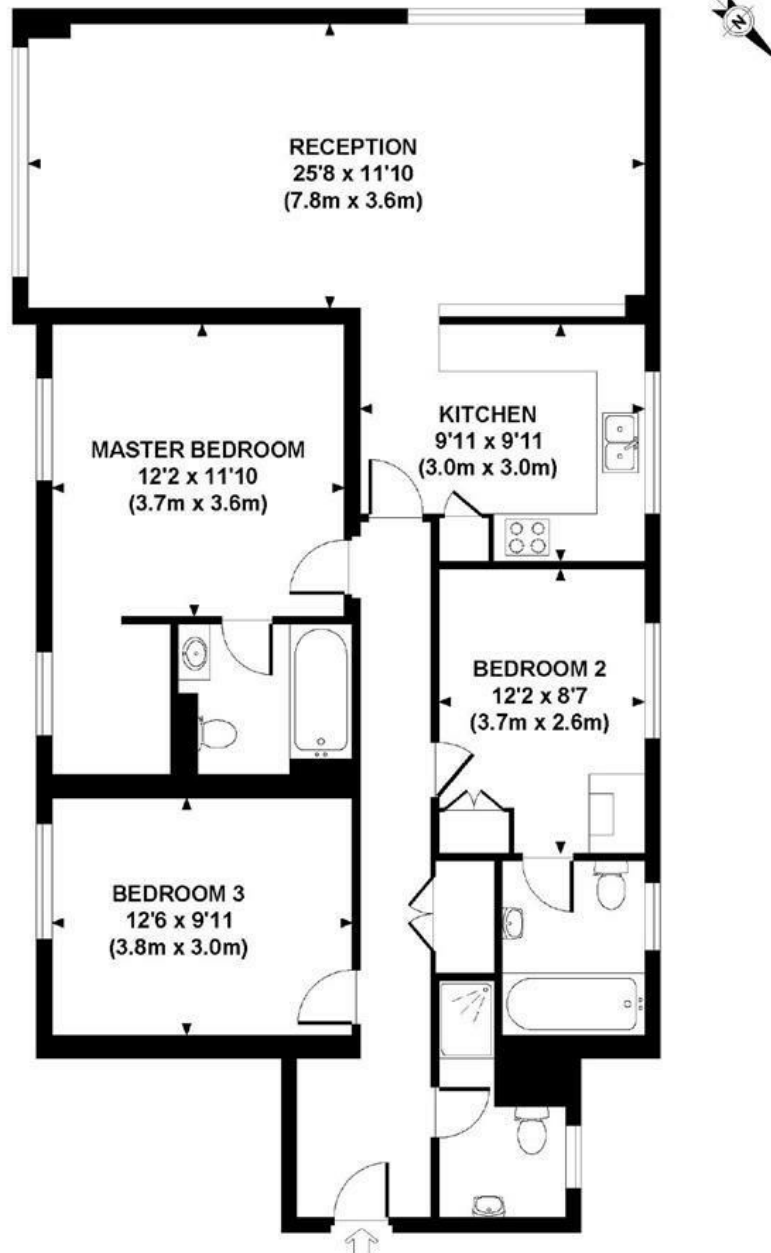








50 Boydell Court
Seventh Floor



APPROXIMATE GROSS INTERNAL AREA 1119 SQ FT / 104 SQ M

Although every attempt has been made to ensure accuracy, all measurements are approximate.
The floor plan's for illustrative purposes only and not to scale. Measured in accordance to RICS standards.
DE-PHOTOGRAPHY.NET